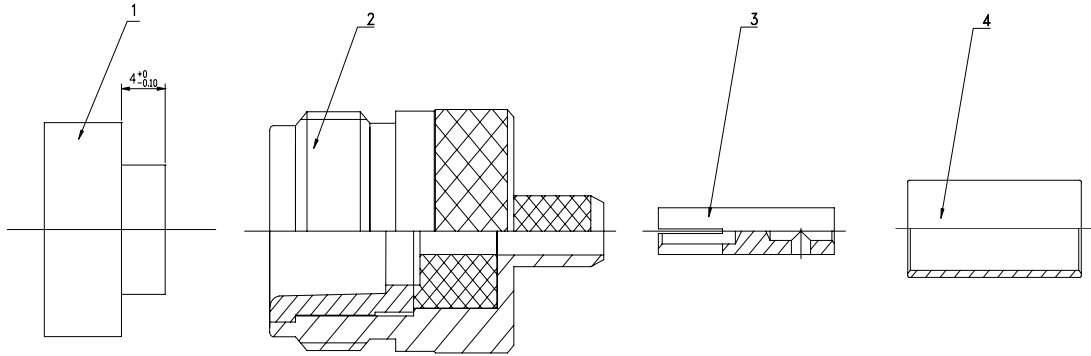


Assembly Instruction

(N Female Crimp Connector For RG58 and RG223 Cable)

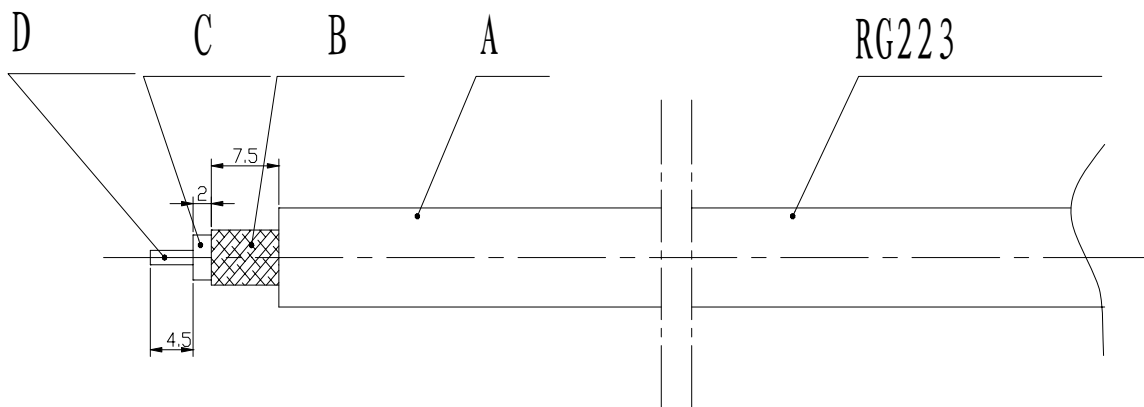
I. Parts Name and Fixed Position Die

- 1.Fixed position die 2.Body 3.Female Pin 4.Crimping Tube

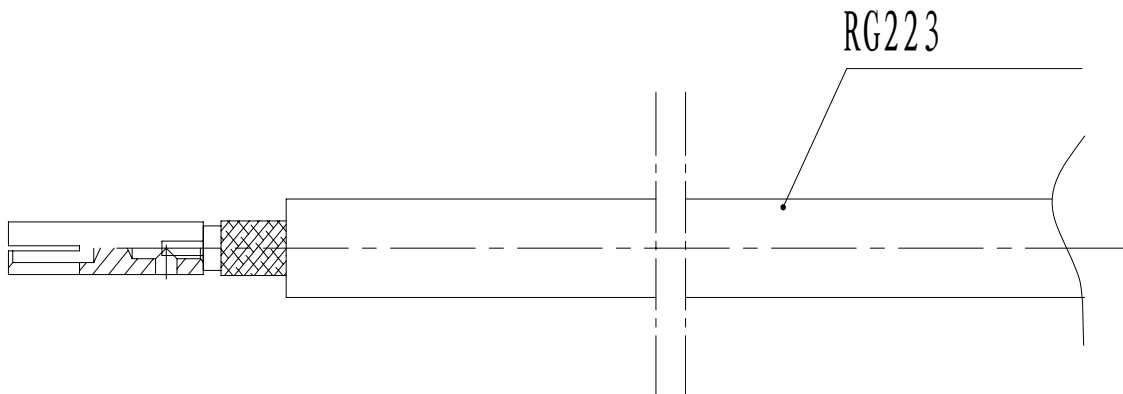


II. Assembly Steps :

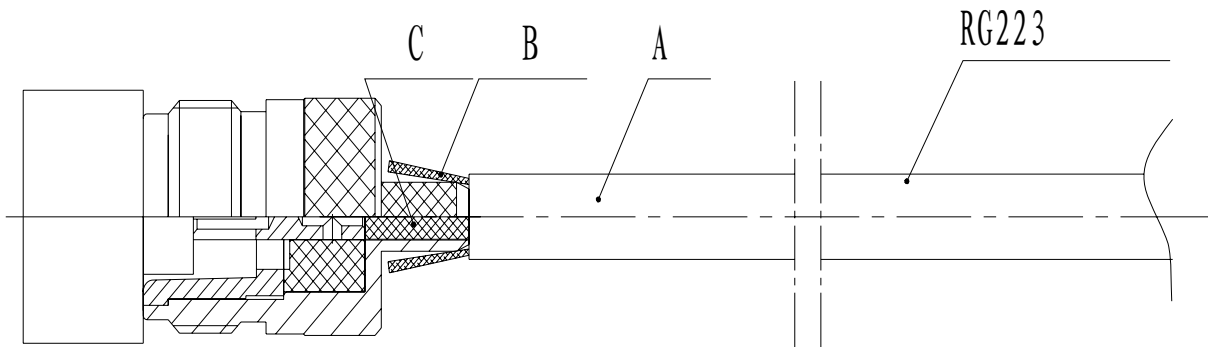
1. Strip the RG58 Cable or RG223 as the following dimension (Inner Conductor: 4.5MM Insulator :2MM Shield :7.5MM. (A :Jacket , B: Shield , C: Insulator, D: Inner Conductor)



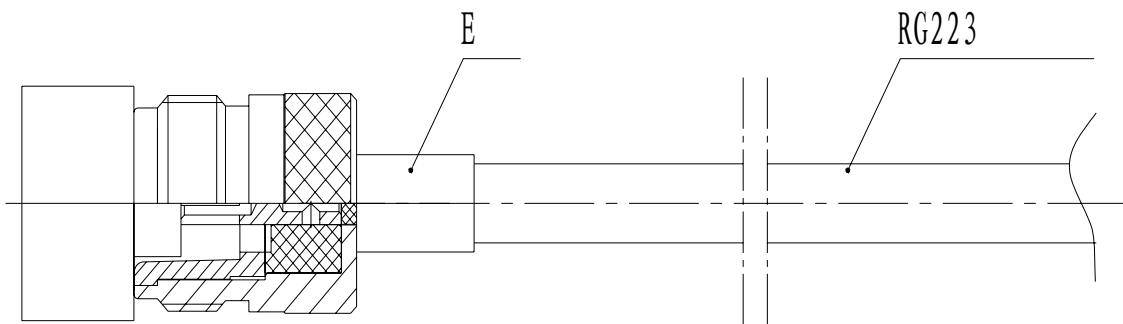
2. Solder the Female pin with Inner Conductor together by using electric soldering iron or soldering machine as shown below



3. Insert the inner conductor into the body and turn over the shield onto the crimp end of body as shown as below.



4. Insert the crimp tube onto the Shield and Put the body into the Fixed position die tightly till the female pin touches the protuberant parts of fixed position die (worker can feel the touching).



5. Put the above assembly parts onto the crimping machine to Crimp the Crimping tube tightly as shown below

